

# St. Clair County Farm Museum

“Preserving A Bit of Yesterday for Tomorrow”



## 2025 Annual Report

# Community Involvement

The newly formed community outreach committee continues work to support and enhance opportunities outside of the museum while fulfilling our mission of educating visitors about early farm life. Volunteer members work to raise much needed funding for the operation and maintenance of the Museum collection. Below are a few examples of our community involvement.

## Pollinator Project



Display at Fall Harvest Days

The Farm Museum entered a partnership with The Pollinator Project, a local organization who's mission is "to provide habitat, research and education regarding global pollination." Bee hives were placed in the fields to help increase pollination of crops planted by the Museum. We hope to include the creation of an educational amphitheater for future use.



Breaking ground for the demonstration area

## Plow Day

Plow day helps the Museum prepare the fields for planting and offers the opportunity to have visitors watch vintage tractors and participate in tilling the soil.



Christian plows with his 1954 Ford model 960



Tommy uses his 1940 model RTU Minneapolis Moline to pull a disc

## 4 - H & MIHA Horse Shows

The Farm Museum provides concessions for the various 4 - H and Michigan Interscholastic Horsemanship Association horse shows held at Goodells County Park

# Community Involvement

## Earth Fair 2025



In addition to Melanie's Diner serving up good food, the Museum provides both wagon and barrel train rides for visitors. With the Museum building open, many school children have the opportunity to experience artifacts of early days on the farm.

## Project R.E.D.



Museum members participate in Project R.E.D. sponsored by the St. Clair County Farm Bureau by providing displays and demonstrations pertaining to early farming practices.



## 4-H and Youth Fair



Left: Aric demonstrates sawing of lumber.  
Above: Fred operates the Case to power the buzz saw

# Community Involvement

## Sperry's Santa Parade



A few members participated in the annual parade

## Students Visit Pumpkin Fest



Special needs students from Holland Woods Middle School were guests at the Museum and were treated with a day at the pumpkin patch



## Touch-A-Truck and Tractor

The Museums collection of petal tractors allows youngsters to experience a "tractor pull".



Always ready for passengers



The Museum provides equipment displays for visitors to enjoy

In cooperation with the St. Clair County Farm Bureau, this event allows youngsters to get up close and experience different types of vehicles including farm equipment.



The Museum provides concessions for the event.

# Events

Volunteers work throughout the year to fulfill the mission of providing an understanding of our heritage, adding to the areas cultural base and enhancing regional tourism. In cooperation with Goodells County Park, the Museum is host to several events throughout the year some which are fundraisers while others are held to provide events for the enjoyment of the visitors.



Youngsters enjoy learning about farm chores



Tod and Bob demonstrate the edging saw



Members of the Bluewater Wood Turners try their hand on the antique Moak lathe

## Fall Harvest Days

The Museums premier event is not just about tractors and engines but is filled with learning and education about rural agricultural life of centuries ago. Members work to demonstrate a variety of chores typical of that period in history.



Spinning demonstrations for all to see



The blacksmith challenge allows visitors the opportunity to try their hand at this ancient craft

## Pumpkin Fest



The recently donated Guernsey Dairy truck makes a good backdrop for the photo booth

Right: The newly cleaned Bull Barn provides Dianne a great space to sell tickets and set up crafts for visitors



# Events

## Breakfast with Santa & Breakfast with the Easter Bunny



Right:  
Visitors line  
up get their  
breakfast  
meal and  
visit with  
Santa



Crafts for the youngsters are provided at both events

These two Museum fund raisers are very popular and provide youngsters an opportunity to interact with their favorite guest of honor. This year with the generosity of Marty of Victor Photography, we were able to offer photos with Santa as an added feature.



## Sleigh Days



Ron Graham takes a second sleigh ride at Goodells County park. His first was 65 years ago.



Mother Nature provided 2 days of chilly fun in 2025.

# Museum Projects

Each year volunteer members tackle items on the long list of projects at the Museum in an attempt to expand and maintain the collection. Shown below is a sampling of the projects that were worked on or completed this past year.



The 1921 Fordson tractor has been in storage for many years and was restored to running condition this past year by member Aric Van-Troostenberghe. It was put to good use at the 2025 plow day event and is seen here pulling a disc while preparing the field for planting.

Another of the Museums collection, the 1935 J.I. Case model C, restored by members Kyle Slifco & Tommy Wilson, was brought out of mothballs after many years. Sporting it's aged patina, the Case still has the power to be of use on plow day, driven here by Matt Ballard.



The newly constructed corn crib holds and saves our corn for demonstrations at Fall Harvest Days.



Cleaning of the South end of the Bull Barn allows this space to be used for displays and during events.

# Member Engagement

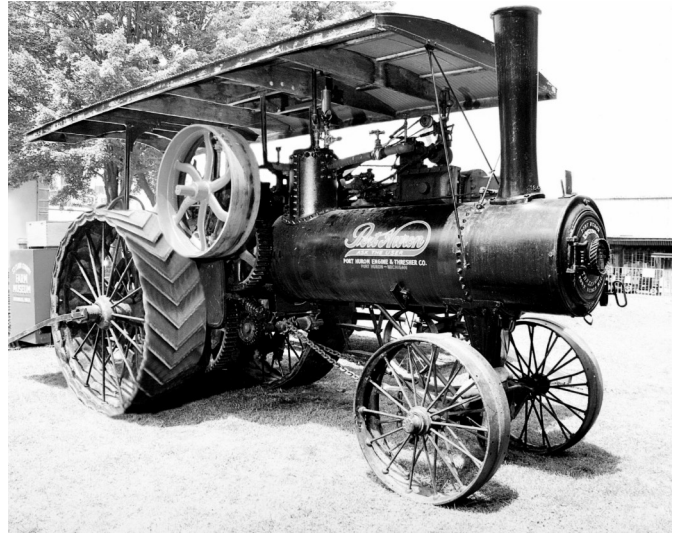
The Farm Museum is a non-profit organization operated totally by volunteer members. Each member brings a unique skill set to the organization and contributes their talents for the good of the Museum. While this is not a complete list, it is just examples of a few of the skills we share. Thanks to all!

## Steam School



Kyle, Tommy, and Matt attended steam school in Wisconsin last summer in their efforts to become certified steam boiler operators. With their knowledge and expertise, visitors and members will be much safer while at the Museum

## Documenting Our Work



Marty of Victor Photographs brings his interest in photography to life as he shares many of the pictures snapped at the Museum events

## Cooks & Bottle Washers



Ed Schwartz making the bean soup and all of the unnamed cooks deserve a thank you for their hard work and good food they serve at many of the Museum events

Right: Kim & Bill of Majestic Heart Carriage Rides provide horse drawn rides for visitors at many of the Museum events



Left: Fred along with Bob & Terry bring their farming skills to the fields to maintain the farming operations

# Farm Museum Field Report

## 2025 - From the Fields

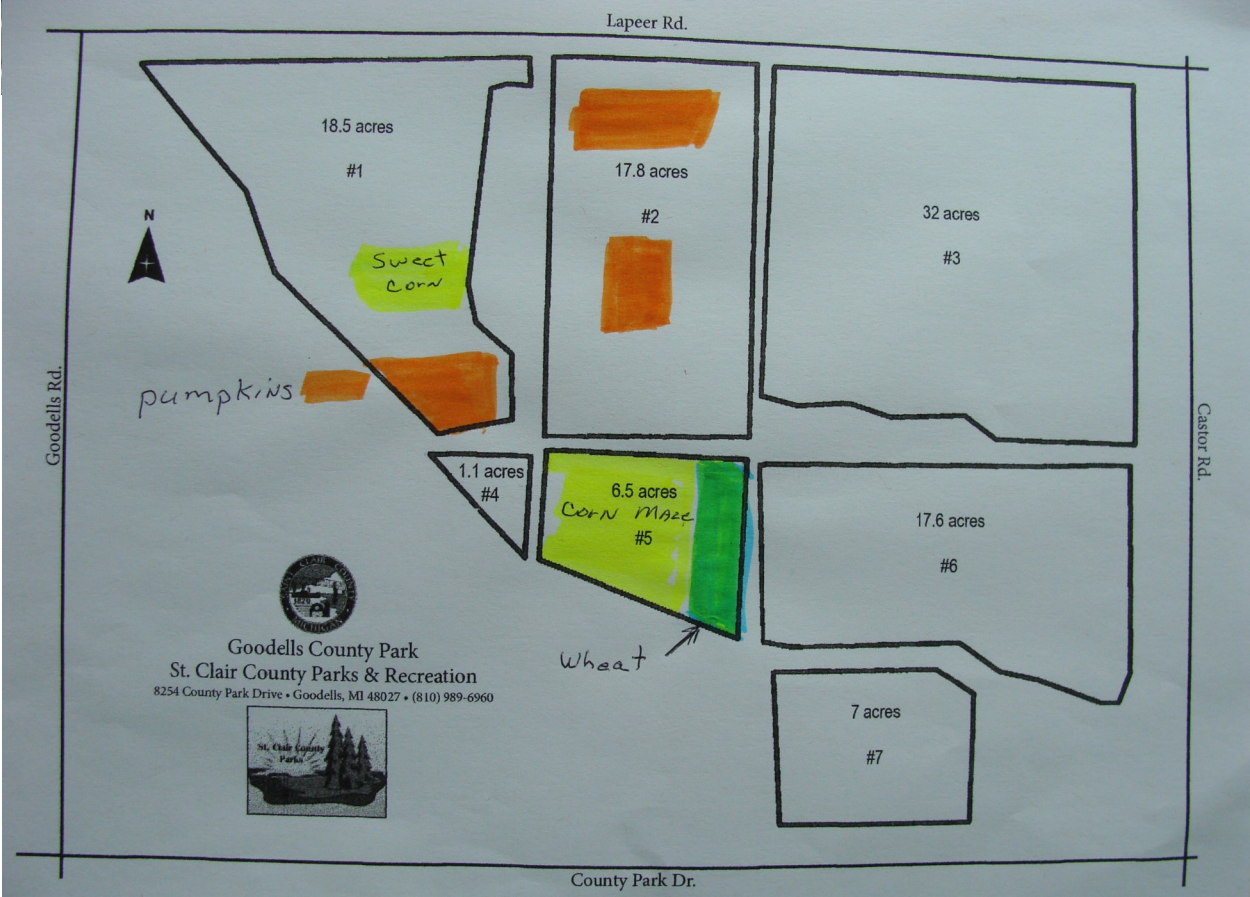
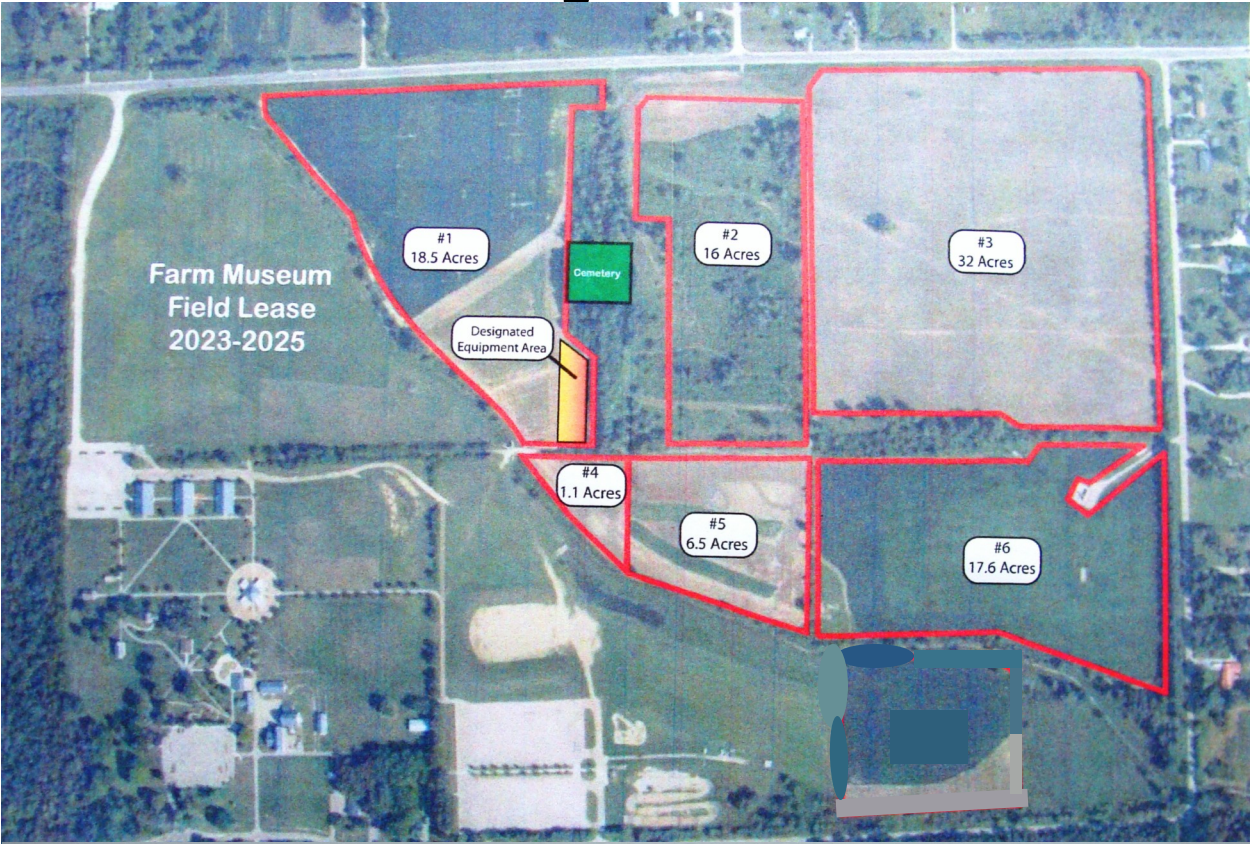
We had a great day at “PLOW DAY” with twelve tractors, including some of our own that hadn’t been in the fields in 40 - 50 years! (see photos on pg. 7). Plus we had an additional 18 - 20 spectators. We plowed, disk, dragged and were ready to fertilize and plant, but a rain shower slowed our progress.

We got the corn maze ( 5 acres ), three pumpkin patches ( 4.5 acres ), and three patches of sweet corn ( 1.8 acres ) planted in the following 2 weeks and were ready for sunshine!

### Fertilizer & Spray

4/17/2025	400 lbs urea	2025 wheat fertilizer
5/28/2025	1500 lbs 19-19-19	sweet corn, corn maze & pumpkin patches
6/20/2025	1 qt. perfect match 1 qt. jackhammer	wheat wheat
6/20/2025	1 qt. roundup 1 qt. jackhammer	sweet corn & corn maze sweet corn & corn maze
6/29/2025	750 lbs urea	sweet corn & corn maze
10/6/2025	1500 lbs 19-19-19	2026 wheat fertilizer

# Goodells County Park Farm Fields



# 2025 Financial Report

2025 Annual	Debit (-)	Credit	Profit/Loss
<b>Operations</b>	\$ (11,300)		\$ (11,300)
<b>Equip. Maint./Supplies/Barn</b>	\$ (24,908)		\$ (24,908)
<b>Misc. Expense/Income</b>	\$ (4,396)	\$ 4,768	\$ 372
<b>Raffle</b>	\$ (14,784)	\$ 15,569	\$ 785
<b>Concessions: Misc. Events</b>	\$ (17,229)	\$ 41,552	\$ 24,323
<b>Easter Breakfast</b>	\$ (1,942)	\$ 4,724	\$ 2,782
<b>Fall Harvest Days</b>	\$ (19,050)	\$ 22,800	\$ 3,750
<b>Pumpkin Fest</b>	\$ (4,052)	\$ 14,187	\$ 10,135
<b>Breakfast with Santa</b>	\$ (1,160)	\$ 2,955	\$ 1,795
<b>Concession: Operations</b>	\$ (18,688)	\$ 63	\$ (18,625)
<b>Total</b>	<b>\$ (117,509)</b>	<b>\$ 106,618</b>	<b>\$ (10,891)</b>

## Helping Build a Community

Not only was the sweet corn that was grown in the park grounds sold at the Fall Harvest Days event, but several ears were donated to the community. Approximately 450 dozen ears of corn were donated to local churches, soup kitchens, homeless shelters and food banks. The generosity of the Museum and the volunteers who picked and distributed the corn help to create a stronger community.

Pumpkin donations are always welcomed at local schools. This past years bountiful crop of pumpkins provided 50 pumpkins to Holland Woods Middle School, 80 pumpkins to Keewahdin kindergarten, and 100 pumpkins to the Michigammi School.

Holland Woods special needs students enjoyed their Friday field trip to the Museums pumpkin patch where they split into groups to explore the Museum, select a pumpkin, experience the corn maze, and enjoy a few crafts. The day was organized by Dana Giancarlo and the students had a blast.

# Our 2025 Sponsors



Thank you to our presenting sponsor - AIS Construction Equipment Corp.

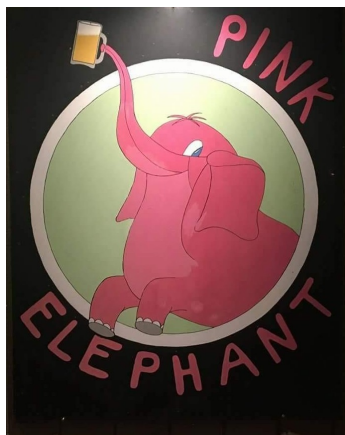
The Museum would like to thank all of the sponsors who provided financial support throughout the year. Without their support, Fall Harvest Days and other events would not be possible. Also, thank you to the St. Clair County Parks for sharing Goodells County Park with us.



Ac - Dc Electrical Contractors



Ageless Machine Works



Week's Meat Market

Morgan Composting



COMPRESSION FUELING SERVICES, LLC.



Bob's Welding  
Avoca, MI

