

St. Clair County Farm Museum

“Preserving A Bit of Yesterday for Tomorrow”



1935 McCormick-Deering 10-20
Donated by: Ralph & Pat Albrecht & family
Restored by: Thomas Zech

2022 Annual Report

Helping Others

Seed & Soul Donations

The Farm Museum continues its support to the community through donations to other organizations. Excess pumpkins were donated to The Seed and Soul Society for distribution to those in need.



Pumpkins on display by Seed and Soul

A Museum For All

Museum member Dennis VanNuck saw a need for making the much loved barrel train accessible to children with limited mobility. Dennis designed and built a “train car” with a ramp to allow a wheel chair bound passenger to ride the rails.

Dennis also noticed that mobility devices were not accommodated at the museum’s pumpkin fest, so in like fashion, he designed and built a ramp so passengers could board the people mover and ride to the pumpkin patch.

Lumber Donation

The Farm Museum recently donated lumber to the Lexington Community Garden group which it used to construct a raised bed garden box. The bed will be planted by an elderly, mobility challenged individual so that he may continue to pursue his gardening passion for years to come.



Lexington garden raised bed

SCC 4-H & Youth Fair

This year the farm museum participated in the St. Clair County 4-H and Youth Fair to provide static displays of farm equipment as well as providing demonstrations of the sawmill operated by the museums Port Huron steam engine. Several member volunteered their time to demonstrate milling of lumber for fair visitors.

At right: 1918 Port Huron Engine

Sharing Sweet Success

In the tradition of the Poor Farm once located at Goodells County Park, the Farm Museum has continued the theme of helping others. With a bumper crop of sweet corn this season, Museum members have helped by harvesting the corn and donating it to local organizations. Members Fred and Dianne Peasley and grandson John Burgess along with members Terry and Derick Dunn picked close to 100 dozen ears for charitable organizations. It was then delivered by Fred, Dianne and Johnny to Harbor Impact, Hillside Wesleyan, First United, SOS, Safe Horizons, Harbor for Youth, Soup Kitchen Port Huron, Food Depot, First Baptist Port Huron, MidCity Nutrition Port Huron, and Talaski Group Home in Bad Axe. In addition, over 27 dozen ears were harvested and cooked for Fall Harvest Days. Thank you Fred, Dianne, John, Terry and Derick.



Community Involvement



Sperry's Santa Parade



Terry on the 10 - 20 pulling the people mover in the Sperry's parade

The Farm Museum was represented in the Sperry's Santa Parade thanks to the work of Terry Dunn. Terry decorated the Museum's 1935 McCormick-Deering 10-20 and a people mover for an entry in the November 25th Port Huron parade.

Sleigh Days 2022

This free event brings people to the park to enjoy a day outside and experience transportation of year's gone by. Museum members found that cold weather didn't bother the nearly 200 people who chose to hop on an antique sleigh for a spin around the farm on February 19th. Horses, Misty and Parker, didn't seem to mind trudging through the snow or walking into the biting winds as they paraded around the field. With the help of members and volunteers Makeyla Romak, Theresa & Ken Romak, Beth Sawdon, Wayne Coon, Cate, Melissa and Jeff Wilson, Kim & Bill Schultz, Scott Eisele, Terry Dunn, Claire & Sophia Dunn, Garry Spencer, & Dennis VanNuck, many visitors enjoyed a sleigh ride and warm hot dogs, chili and hot chocolate.



Seed and Soul Society

The museum partners with the Seed & Soul Society by providing assistance with land tilling. Seed & Soul is an equitable non-profit collective, centered in Michigan's St. Clair County, focusing on sustainable agriculture and mutual growth.



Cate Wilson drives Misty while giving sleigh rides

The 4-H club, **Equestrian Express**, under the leadership of Linda Taylor, demonstrated a portion of the 4-H pledge prior to the museums March meeting. Pledging their "hands to larger service"... "for my community", the club spent a great deal of time filling Easter eggs to be used at the Easter Bunny Breakfast. Thank you to all of the helpers.

Santa Breakfast --Troop 141

The Farm Museum would like to thank two members of the former Avoca Boy Scout Troop 141. Justin Morrison and Evan Frankowiak assisted patrons by helping clear the tables after their meal. These two Scouts always lend a helping hand by providing community service at Museum events.

Events

The farm museum is host to several events throughout the year. Some of the events raise funds to keep the museum in operation while others are held to benefit the visitors to the museum. Volunteer members work through the year to promote the farm museum at Goodells County Park in an attempt to increase awareness of the museum and park and to fulfill its mission to provide an understanding of our heritage, add to our areas cultural base and enhance regional tourism.



Waiting for a Ride at Sleigh Days



Enjoying Breakfast with the Easter Bunny



Preparing the Field at Plow Days



Touring the Museum at Earth Fair



Hugs Are GOOD !!!



Barrel Train Rides at Earth Fair

Events



Reindeer Shed at Breakfast with Santa



Log Rolling at Lumberjack Show



Tractor Displays at Fall Harvest Days



Operating the Sawmill at 4-H Youth Fair



Rides to the Pumpkin Patch at Pumpkin Fest



Speed Sawing at Lumberjack Show

Museum Projects



Farmall Tractor with New Paint and Head Gasket



1952/53 Ford F-5 Poor Farm Truck



Ford Tractor Being Reassembled



Rebuilding Water Tanks for Port Huron Engine



Oliver Model 5 Corn Picker Rebirth



Concession Trailer Wrap in Memory of Garry Spencer

Farm Museum Field Report

We planted:

25 Acres of Soy Beans

5 Acres of Wheat

2 Acres of Sweet Corn

2 Acres of Field Corn

5 Acres of Pumpkins

We worked approximately 2 1/2 Acres for Seed & Soul in field #4 & #5

We summer fallowed fields #6 & #7 and planted into wheat in the fall of 2022

We planted field corn & wheat in parts of field #2 to lure DEER away from pumpkin patch

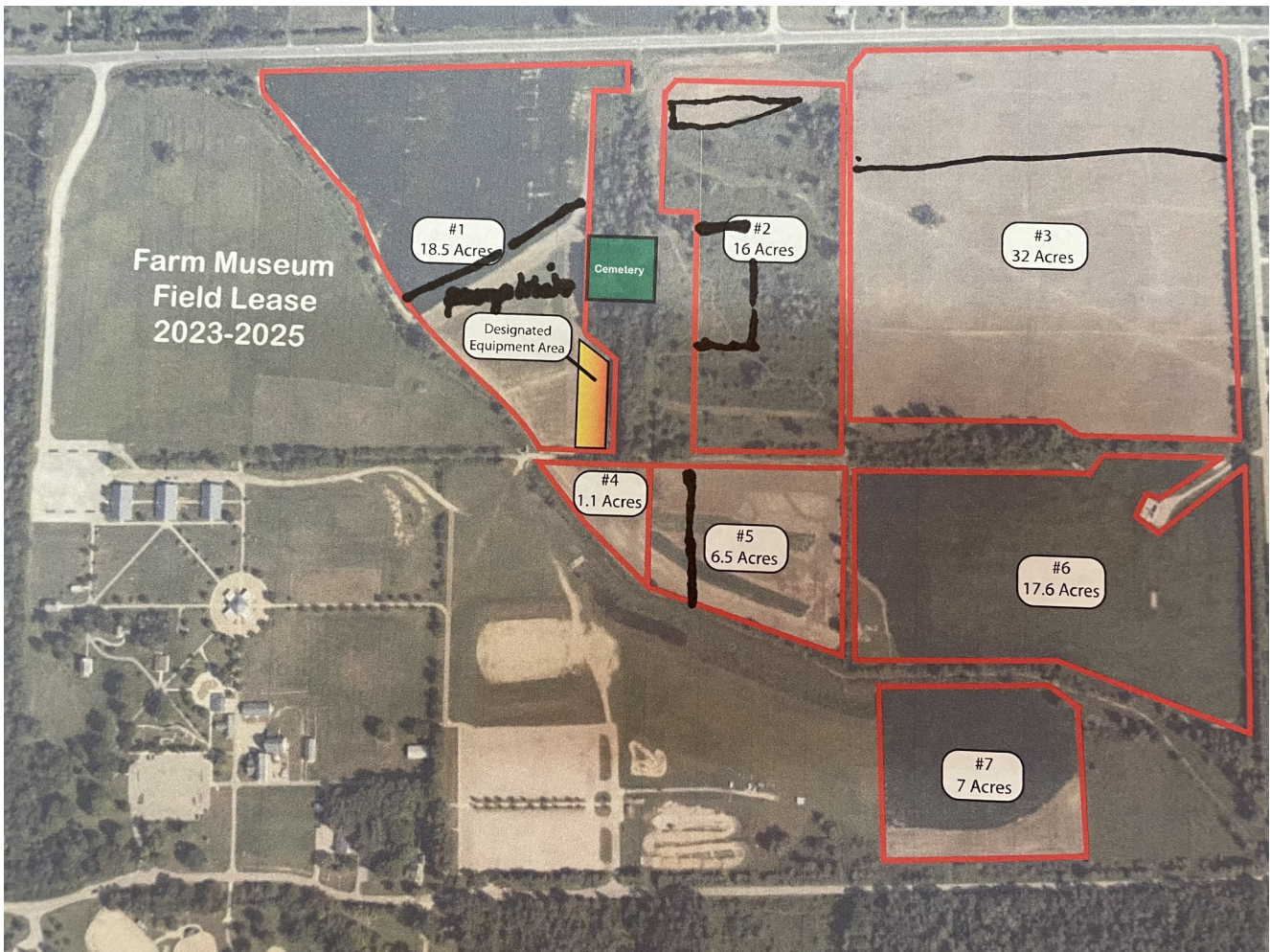
Inputs:

Soy Bean Seed	\$1330.00	South 3/4 of field #3
Pumpkin Seed	\$910.10	South half of field #1
Sweet Corn	\$49.00	West half of field #5
Field Corn	\$50.56	
Fertilizer	\$13580.00	
Chemical	\$1958.00	
Fuel	\$2011.00	
	<hr/>	
	\$19888.66	
Sales and Donations	\$10066.77	
Total	(\$9821.89)	

We had a good crop of Sweet Corn & Pumpkins, Everyone enjoyed the rides to the patch and picking out their very own Pumpkin! The Deer ate all of the Field Corn in the patch in field #2 and consumed enough of the Beans in field #3 that we decided we couldn't cover our cost of fuel to harvest them.

Goodells County Park

Farm Fields



2022 Financial Report

2022 Annual	Debit	Credit	Profit/Loss
Advertizing	\$ (797.15)		\$ (797.15)
Bills & Utilities	\$ (3,624.34)		\$ (3,624.34)
Concessions	\$ (33,321.70)	\$ 49,246.90	\$ 15,925.20
Donation		\$ 3,952.00	\$ 3,952.00
Easter	\$ (310.00)	\$ 1,034.00	\$ 724.00
Farming	\$ (19,888.66)	\$ 10,066.77	\$ (9,821.89)
Harvest Days	\$ (32,759.96)	\$ 42,300.00	\$ 9,540.04
Membership 2022		\$ 140.00	\$ 140.00
Membership 2023		\$ 900.00	\$ 900.00
Projects	\$ (1,919.55)		\$ (1,919.55)
Raffle	\$ (9,051.00)	\$ 15,435.00	\$ 6,384.00
Santa	\$ (563.71)	\$ 505.00	\$ (58.71)
Sawmill		\$ 410.00	\$ 410.00
Sleigh Day	\$ (50.00)	\$ 679.61	\$ 629.61
Steam	\$ (8,805.71)		\$ (8,805.71)
	\$ (111,091.78)	\$ 124,669.28	\$ 13,577.50